



HERON[®] MS TWIN

Comfy and versatile portable 3D mapping system.

Double LiDAR sensor for robust 3D geometry acquisition.

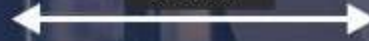
Key applications: **indoors/outdoors**, complex and **multi-level** buildings, **underground**, geospatial projects.

On-premise software packages for full data processing.

Long-range configuration available.



3.70 m



9.56 m



HERON family

INDOOR/OUTDOOR

Wearable or handheld mobile laser scanner. Versatile and suitable for any environment.

Your unmatched SLAM-based solution!

AUTOMATIC

Turn on the system and start surveying. Just walk and leave the scanner working for you.

Enjoy a professional system easy-to-use!

COMPLETE DATA

3D point clouds and 5k pano images to gather both geometry and color information at once.

The scanner you can no longer give up!

ALL-IN-ONE

Full post-processing software included. Third-party compatibility provided.

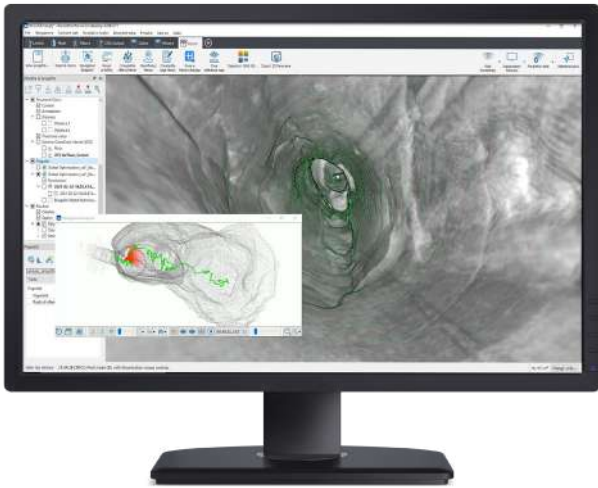
A forefront technology at your fingertips!

USABILITY

- Easy geo-referencing procedure
- Loop closure not mandatory
- **Initialization** procedure **not required**
- Automatic self-localization in a reference model
- **Control points** and scans used **as constraints**
- Wired rugged backpack usable for acquisition and transport
- **Versatile capture head** dockable also to telescopic poles or vehicles (cars, bikes, quads, etc.)
- Rugged touch screen Control Unit providing:
 - Full system control
 - Annotations
 - Real-time view of the point cloud generation
 - Hands-free configuration

DATA PROCESSING

- **Accurate 3D models** also in complex environments
- **Very dense point cloud rendering** with multiple color layers
- Direct export of 3D data to **ReCap Pro**
- Easy data export to third-party software (e.g. 3DM Feature Extraction, EdgeWise, Micromine, Scene, Verity) and **cloud platforms** (e.g. 3DM Cloud, 3DUserNetVISION, Cintoo Cloud, Scene Webshare) through the .e57 format
- Advanced point cloud rendering which emphasizes **features and details**
- **3D models navigation** tools
- Tracking mode for **change detection** applications



APPLICATIONS

- Indoors
- Stockpiles
- BIM Models
- Tunnels
- Underground Mines
- Multi-level Buildings
- Large, Complex, Harsh Environments
- Cultural Heritage
- Geospatial
- Real Estate Assets Management
- Urban Areas
- Outdoors (with geometry)
- Forests
- Fast and Sharable Plan Views
- Multi-sensor Projects
- Progress Monitoring in Construction Sites
- Forensic

INCLUDED SOFTWARE

What you need to create and navigate 3D models and share results



HERON Desktop®

Post-processing SLAM software

To manage HERON raw data and automatically get accurate 3D point cloud models using a patented SLAM algorithm; split and merge survey trajectories and filter moving objects. Advanced mode to customize SLAM parameters. Use of GNSS coordinates for geolocalization.



Reconstructor®

Advanced 3D point cloud analysis software

Complete post-processing workflow for data from HERON or tripod/handheld/mobile sensors and UAV 3D point clouds. Powerful automatic target-less scans registration. Data export in several standard formats. Full compatibility with several third-party software and cloud platforms. Point cloud editing, color camera calibration, mesh and DTM generation, volume/cut&fill volume calculations, cross-sections and profiles extraction.



GoBlueprint®

Free tool for 2.5D maps

A user-friendly viewer of X-ray 2.5D scaled images (obtained with Reconstructor), designed to quickly share models with final clients letting them easily measure distances, areas, volumes. It runs on any Windows-based tablet or pc.



HERON is designed in collaboration with the *European Commission Joint Research Centre*. HERON, Reconstructor, GoBlueprint are Gexcel trademarks. All rights reserved. Third-party software included in these pages are trademarks. All rights reserved to the companies that own the software. Gexcel is not affiliated with any of third-party software listed on these pages.

